

# LED Retrofitkit E39-E27

Shoebox and Highbay LED Retrofit Kit.



**E27-E39**

**80 Watt**

**80 CRI**

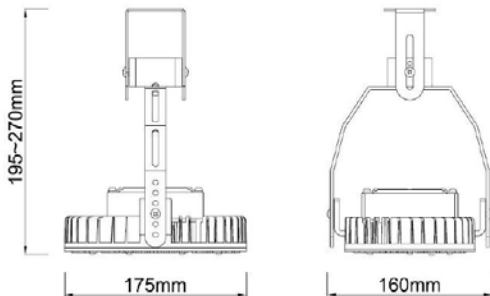
**50000hrs**



## FEATURES

- Phillips 3030 Chips
- Type B Ballast By Pass 100-277AC
- Replaces 175W MH
- Environmentally friendly; no mercury or lead
- 5 year product warranty
- Choice of 4000K, 5000K, 6000K
- Meanwell Driver
- Up to 80% energy savings
- Ultra-high performance LED delivers 120 lpw
- Suitable for dry or damp locations

## DIMENSIONS



## APPLICATIONS

- Street Lights
- Parking Lot Lights
- Warehouses
- Canopy Lights
- Subways
- Underground parking lots

## SPECIFICATIONS

Watts	Volts	Lumens	Beam Angle	CCT	CRI
80W	AC120-277V	9600 lm	180 degrees /4000K/5000k/6000K		>80
Efficiency	PF	Base	Shape	Rated Life	Approvals
120lm/W	>0.95	E27-E39	Retrofit Kit	50000hrs	UL/cUL,DLC V4.0

## ORDERING GUIDE

Example: GG-E39-RTFK-80W-840

Company	Series	Type	Watts	CCT	Mode
GG - Global Green	E27-E39	: RTFK	80W	840	-CRI80, 4000K
				850	-CRI80, 5000K
				860	-CRI80, 6000K

# LED Retrofitkit E39-E27

Shoebox and Highbay LED Retrofit Kit.



**E27-E39**

**100 Watt**

**80 CRI**

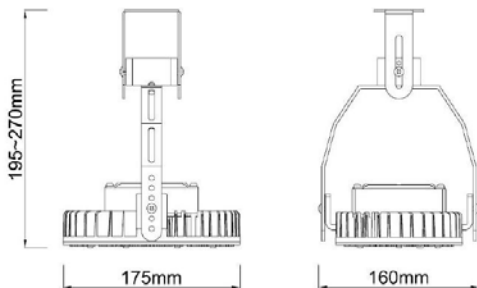
**50000hrs**



## FEATURES

- Phillips 3030 Chips
- Type B Ballast By Pass 100-277AC
- Replaces 175W MH
- Environmentally friendly; no mercury or lead
- 5 year product warranty
- Choice of 4000K, 5000K, 6000K
- Meanwell Driver
- Up to 80% energy savings
- Ultra-high performance LED delivers 120 lpw
- Suitable for dry or damp locations

## DIMENSIONS



## APPLICATIONS

- Street Lights
- Parking Lot Lights
- Warehouses
- Canopy Lights
- Subways
- Underground parking lots

## SPECIFICATIONS

Watts	Volts	Lumens	Beam Angle	CCT	CRI
100W	AC120-277V	12000 lm	180 degrees /4000K/5000k/6000K		>80
Efficiency	PF	Base	Shape	Rated Life	Approvals
120lm/W	>0.95	E27-E39	Retrofit Kit	50000hrs	UL/cUL,DLC V4.0

## ORDERING GUIDE

Example: GG-E39-RTFK-100W-840

Company	Series	Type	Watts	CCT	Mode
GG - Global Green	E27-E39	: RTFK	100W	840	-CRI80, 4000K
				850	-CRI80, 5000K
				860	-CRI80, 6000K

# LED Retrofitkit E39-E27

Shoebox and Highbay LED Retrofit Kit.



**E27-E39**

**120 Watt**

**80 CRI**

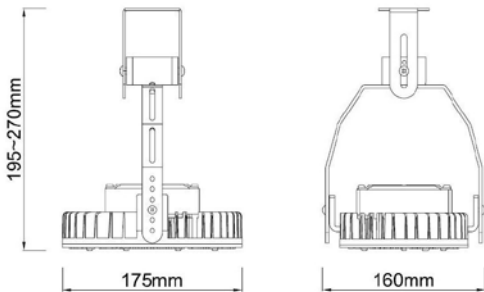
**50000hrs**



## FEATURES

- Phillips 3030 Chips
- Type B Ballast By Pass 100-277AC
- Replaces 250W MH
- Environmentally friendly; no mercury or lead
- 5 year product warranty
- Choice of 4000K, 5000K, 6000K
- Meanwell Driver
- Up to 80% energy savings
- Ultra-high performance LED delivers 120 lpw
- Suitable for dry or damp locations

## DIMENSIONS



## APPLICATIONS

- Street Lights
- Parking Lot Lights
- Warehouses
- Canopy Lights
- Subways
- Underground parking lots

## SPECIFICATIONS

Watts	Volts	Lumens	Beam Angle	CCT	CRI
120W	AC120-277V	12000 lm	180 degrees /4000K/5000k/6000K		>80
Efficiency	PF	Base	Shape	Rated Life	Approvals
120lm/W	>0.95	E27-E39	Retrofit Kit	50000hrs	UL/cUL,DLC V4.0

## ORDERING GUIDE

Example: GG-E39-RTFK-120W-840

Company	Series	Type	Watts	CCT	Mode
GG - Global Green	E27-E39	: RTFK	120W	840	-CRI80, 4000K
				850	-CRI80, 5000K
				860	-CRI80, 6000K



GLOBAL GREEN CORPORATION

# LED Retrofitkit E39-E27

Shoebox and Highbay LED Retrofit Kit.



E27-E39

150 Watt

80 CRI

50000hrs

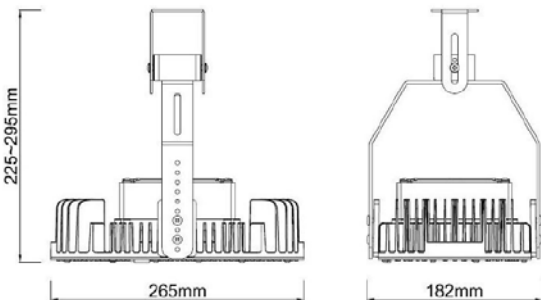


## FEATURES

- Phillips 3030 Chips
- Type B Ballast By Pass 100-277AC
- Replaces 400W MH
- Environmentally friendly; no mercury or lead
- 5 year product warranty
- Choice of 4000K, 5000K, 6000K
- Meanwell Driver
- Up to 80% energy savings
- Ultra-high performance LED delivers 120 lpw
- Suitable for dry or damp locations

## DIMENSIONS

## APPLICATIONS



- Street Lights
- Parking Lot Lights
- Warehouses
- Canopy Lights
- Subways
- Underground parking lots

## SPECIFICATIONS

Watts	Volts	Lumens	Beam Angle	CCT	CRI
150W	AC120-277V	18000 lm	180 degrees /4000K/5000k/6000K		>80
Efficiency	PF	Base	Shape	Rated Life	Approvals
120lm/W	>0.95	E27-E39	Retrofit Kit	50000hrs	UL/cUL,DLC V4.0

## ORDERING GUIDE

Example: GG-E39-RTFK-150W-840

Company	Series	Type	Watts	CCT	Mode
GG - Global Green	E27-E39	: RTFK	150W	840	-CRI80, 4000K
				850	-CRI80, 5000K
				860	-CRI80, 6000K



# LED Retrofitkit E39-E27

Shoebox and Highbay LED Retrofit Kit.



E27-E39

200 Watt

80 CRI

50000hrs

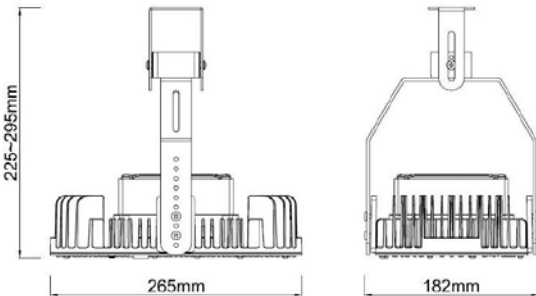


## FEATURES

- Phillips 3030 Chips
- Type B Ballast By Pass 100-277AC
- Replaces 400W MH
- Environmentally friendly; no mercury or lead
- 5 year product warranty
- Choice of 4000K, 5000K, 6000K
- Meanwell Driver
- Up to 80% energy savings
- Ultra-high performance LED delivers 120 lpw
- Suitable for dry or damp locations



## DIMENSIONS



## APPLICATIONS

- Street Lights
- Parking Lot Lights
- Warehouses
- Canopy Lights
- Subways
- Underground parking lots

## SPECIFICATIONS

Watts	Volts	Lumens	Beam Angle	CCT	CRI
200W	AC120-277V	24000 lm	180 degrees /4000K/5000k/6000K		>80
Efficiency	PF	Base	Shape	Rated Life	Approvals
120lm/W	>0.95	E27-E39	Retrofit Kit	50000hrs	UL/cUL,DLC V4.0

## ORDERING GUIDE

Example: GG-E39-RTFK-200W-840

Company	Series	Type	Watts	CCT	Mode
GG - Global Green	E27-E39	: RTFK	200W	840	-CRI80, 4000K
				850	-CRI80, 5000K
				860	-CRI80, 6000K

# LED Retrokit E39-E27

Shoebox and Highbay LED Retrofit Kit.



**E27-E39**

**240 Watt**

**80 CRI**

**50000hrs**

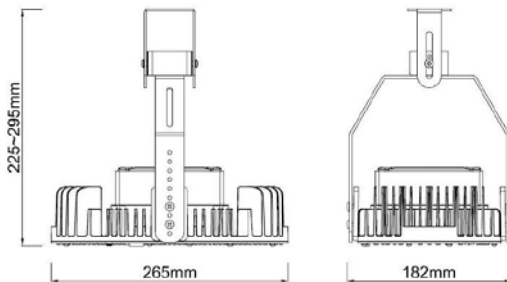


## FEATURES

- Phillips 3030 Chips
- Type B Ballast By Pass 100-277AC
- Replaces 400W MH
- Environmentally friendly; no mercury or lead
- 5 year product warranty
- Choice of 4000K, 5000K, 6000K
- Meanwell Driver
- Up to 80% energy savings
- Ultra-high performance LED delivers 120 lpw
- Suitable for dry or damp locations



## DIMENSIONS



## APPLICATIONS

- Street Lights
- Parking Lot Lights
- Warehouses
- Canopy Lights
- Subways
- Underground parking lots

## SPECIFICATIONS

Watts	Volts	Lumens	Beam Angle	CCT	CRI
240W	AC120-277V	28800 lm	180 degrees /4000K/5000k/6000K		>80
Efficiency	PF	Base	Shape	Rated Life	Approvals
120lm/W	>0.95	E27-E39	Retrofit Kit	50000hrs	UL/cUL, DLC V4.0

## ORDERING GUIDE

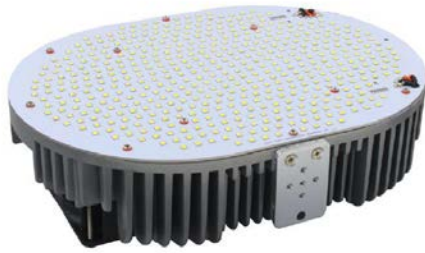
Example: GG-E39-RTFK-240W-840

Company	Series	Type	Watts	CCT	Mode
GG - Global Green	E27-E39 : RTFK		240W	840	-CRI80, 4000K
				850	-CRI80, 5000K
				860	-CRI80, 6000K



# LED Retrofitkit E39-E27

Shoebox and Highbay LED Retrofit Kit.



**E27-E39**

**300 Watt**

**80 CRI**

**50000hrs**



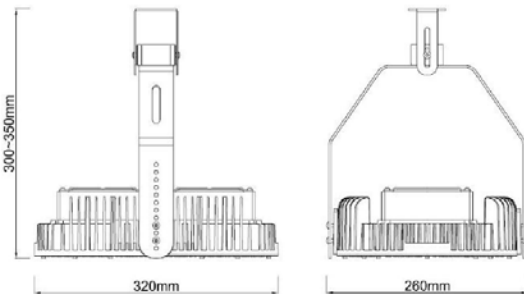
## FEATURES

- Phillips 3030 Chips
- Type B Ballast By Pass 100-277AC
- Replaces 1000W MH
- Environmentally friendly; no mercury or lead
- 5 year product warranty
- Choice of 4000K, 5000K, 6000K
- Meanwell Driver
- Up to 80% energy savings
- Ultra-high performance LED delivers 120 lpw
- Suitable for dry or damp locations



## DIMENSIONS

## APPLICATIONS



- Street Lights
- Parking Lot Lights
- Warehouses
- Canopy Lights
- Subways
- Underground parking lots

## SPECIFICATIONS

Watts	Volts	Lumens	Beam Angle	CCT	CRI
300W	AC120-277V	36000 lm	180 degrees /4000K/5000k/6000K		>80
Efficiency	PF	Base	Shape	Rated Life	Approvals
120lm/W	>0.95	E27-E39	Retrofit Kit	50000hrs	UL/cUL,DLC V4.0

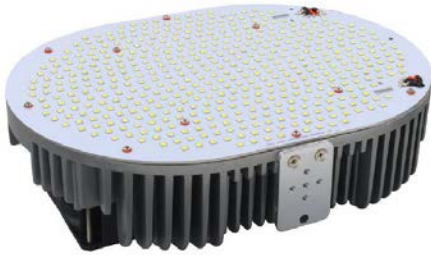
## ORDERING GUIDE

Example: GG-E39-RTFK-300W-840

Company	Series	Type	Watts	CCT	Mode
GG - Global Green	E27-E39	: RTFK	300W	840	-CRI80, 4000K
				850	-CRI80, 5000K
				860	-CRI80, 6000K

# LED Retrofitkit E39-E27

Shoebox and Highbay LED Retrofit Kit.



**E27-E39**

**400 Watt**

**80 CRI**

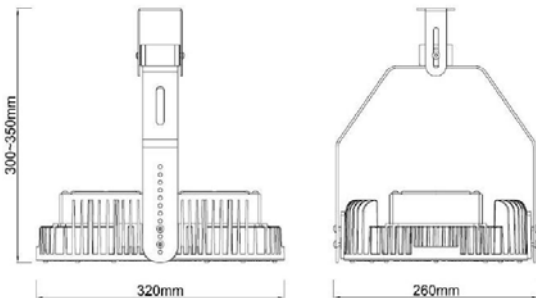
**50000hrs**



## FEATURES

- Phillips 3030 Chips
- Type B Ballast By Pass 100-277AC
- Replaces 1000W MH
- Environmentally friendly; no mercury or lead
- 5 year product warranty
- Choice of 4000K, 5000K, 6000K
- Meanwell Driver
- Up to 80% energy savings
- Ultra-high performance LED delivers 120 lpw
- Suitable for dry or damp locations

## DIMENSIONS



## APPLICATIONS

- Street Lights
- Parking Lot Lights
- Warehouses
- Canopy Lights
- Subways
- Underground parking lots

## SPECIFICATIONS

Watts	Volts	Lumens	Beam Angle	CCT	CRI
400W	AC120-277V	48000 lm	180 degrees /4000K/5000k/6000K		>80
Efficiency	PF	Base	Shape	Rated Life	Approvals
120lm/W	>0.95	E27-E39	Retrofit Kit	50000hrs	UL/cUL,DLC V4.0

## ORDERING GUIDE

Example: GG-E39-RTFK-400W-840

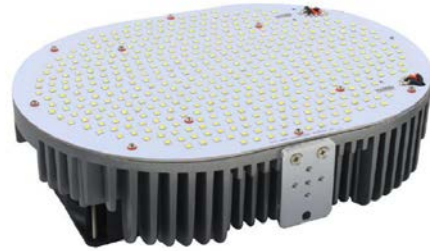
Company	Series	Type	Watts	CCT	Mode
GG - Global Green	E27-E39	: RTFK	400W	840	-CRI80, 4000K
				850	-CRI80, 5000K
				860	-CRI80, 6000K



# LED Retrofitkit E39-E27

Shoebox and Highbay LED Retrofit Kit.

E27-E39



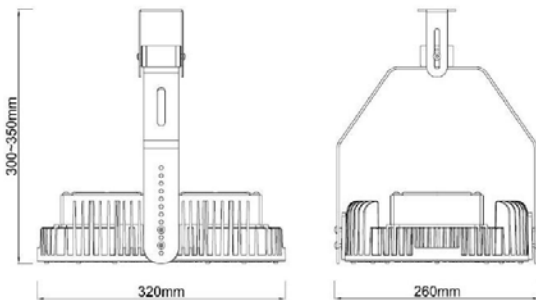
50000hrs



## FEATURES

- Phillips 3030 Chips
- Type B Ballast By Pass 100-277AC
- Replaces 1000W MH
- Environmentally friendly; no mercury or lead
- 5 year product warranty
- Choice of 4000K, 5000K, 6000K
- Meanwell Driver
- Up to 80% energy savings
- Ultra-high performance LED delivers 120 lpw
- Suitable for dry or damp locations

## DIMENSIONS



## APPLICATIONS

- Street Lights
- Parking Lot Lights
- Warehouses
- Canopy Lights
- Subways
- Underground parking lots

## SPECIFICATIONS

Watts	Volts	Lumens	Beam Angle	CCT	CRI
480W	AC120-277V	57600 lm	180 degrees / 4000K/5000k/6000K		>80
Efficiency	PF	Base	Shape	Rated Life	Approvals
120lm/W	>0.95	E27-E39	Retrofit Kit	50000hrs	UL/cUL,DLC V4.0

## ORDERING GUIDE

Example: GG-E39-RTFK-480W-840

Company	Series	Type	Watts	CCT	Mode
GG - Global Green	E27-E39 : RTFK		480W	840	-CRI80, 4000K
				850	-CRI80, 5000K
				860	-CRI80, 6000K